



Let **UK** Home

1 Bedrooms

Flat

Located in London

£2,750 Per Month



info@letukhome.co.uk

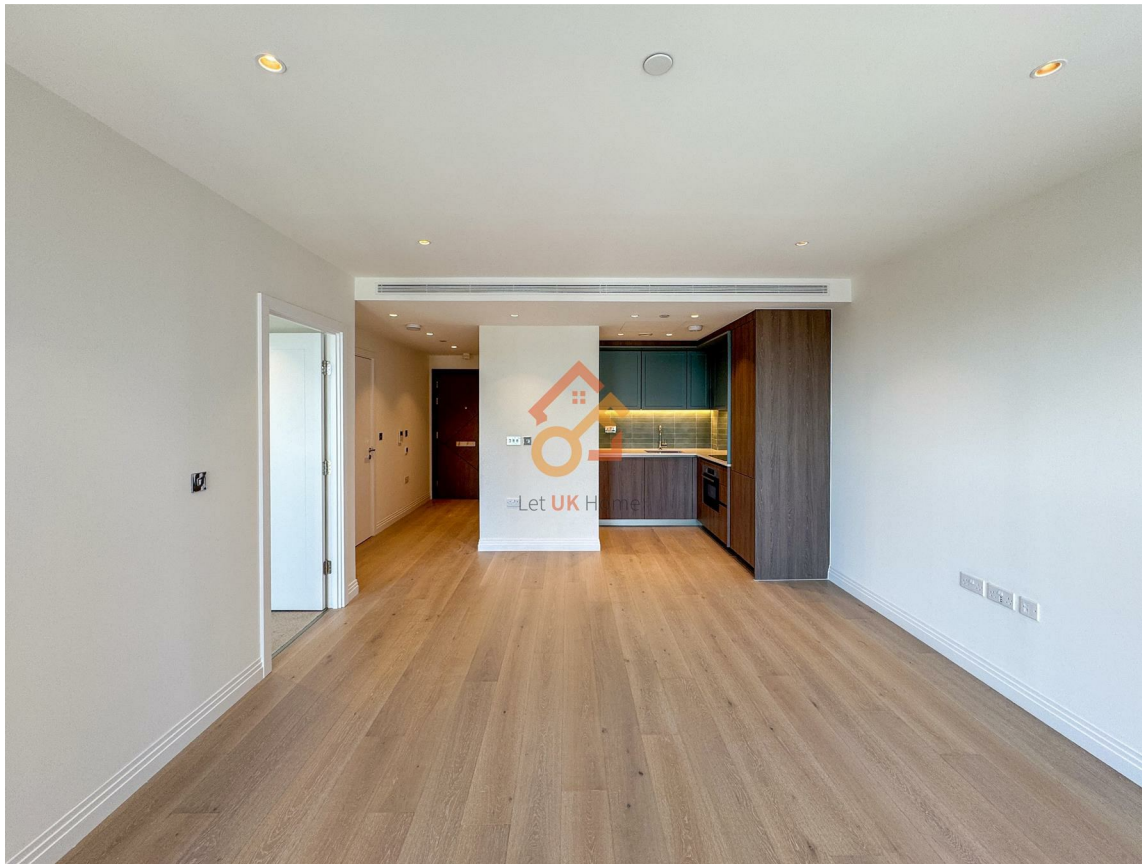
<https://www.letukhome.co.uk/>

01795 358 886



10 Gasholder Place London

SE11 5BB



Let UK Home are excited to offer this spectacular one-bedroom apartment located at The Pinnacle within Oval Village development in Vauxhall.

This property comprises a large bright open plan kitchen and living room leading to a large private balcony with great views, one double bedroom, a large family sized bathroom and ample storage. Virtual viewing is available.

Residents of this exceptional development will have exclusive use of the spa, indoor swimming pool, sauna, gymnasium and private screening room. Furthermore, residents will also benefit from concierge service and an unrivalled selection of shops, bars, restaurants, leisure facilities and beautiful courtyards.

The apartment is surrounded by three subway lines. It is within walking distance of three subway stations, Vauxhall, Oval and Kennington, and two subway lines, Victoria Line and Northern Line, which can lead to all important stations in central London.

The apartment is close to the Kia Cricket Ground, which is the cricket ground with the most cricket matches in the UK. At the same time, daily life is very convenient, there is a large Tesco downstairs, and it is close to Kennington Park and the US Embassy.

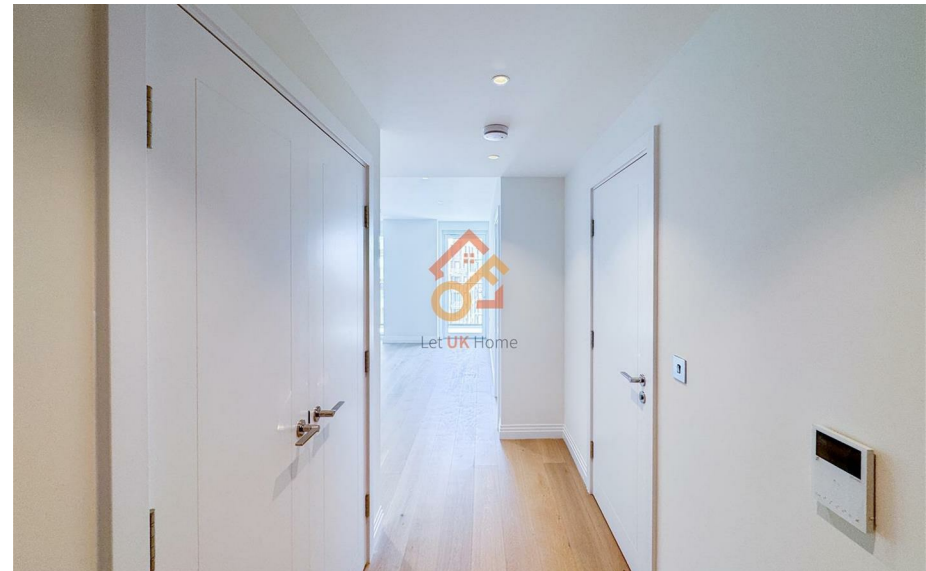
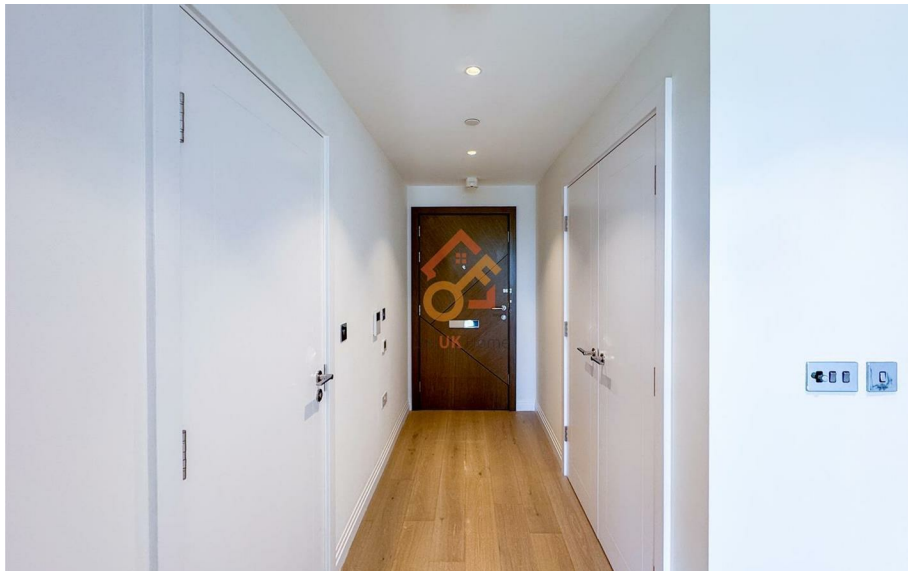
10 Gasholder Place London

£2,750 Per Month



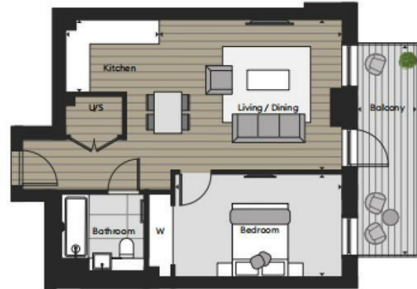
- 7th Floor
- Swimming Pool
- 24h Security
- Residents Lounge
- Virtual Viewing Available.

- The Gym & The Spa
- Cinema & Game Room
- Concierge Service
- Sauna & Steam Room
- EPC Rating: B



One bedroom apartment

TYPE M



Living / Dining	4.88 x 4.03m	16'0" x 13'2"
Kitchen	2.50 x 1.95m	8'2" x 6'5"
Bedroom	4.44 x 2.75m	14'6" x 9'0"
Balcony	1.89 x 5.42m	6'2" x 17'8"



Total floor area

52 square metres



Let **UK** Home

3F 2 Eastbourne Terrace
Paddington
London
W2 6LG

01795 358 886

info@letukhome.co.uk

Council Tax Band:

Local Authority:

Agents Note: Whilst every care has been taken to prepare these particulars, they are for guidance purposes only. All measurements are approximate and are for general guidance purposes only and whilst every care has been taken to ensure their accuracy, they should not be relied upon and potential buyers/tenants are advised to recheck the measurements.

Energy Efficiency Rating		Current	Potential
Very energy efficient - lower running costs			
(92 plus) A			
(81-91) B		86	86
(69-80) C			
(55-68) D			
(39-54) E			
(21-38) F			
(1-20) G			
Not energy efficient - higher running costs			
England & Wales		EU Directive 2002/91/EC	

<https://www.letukhome.co.uk/>